

L- Bracket



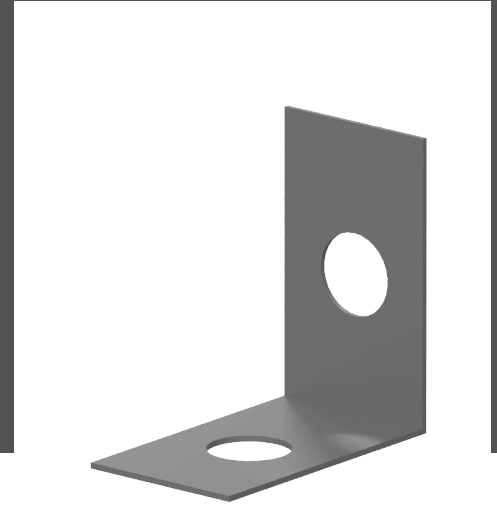
ISO 9001:2015
No.: 92200062



ISO 14001:2015
No.: 142200063



ISO 45001:2018
No.: 452200064



DESCRIPTION

Gframe™ L-bracket is a simple rigid structure in the form of an L. It is used in dry lining and external cladding applications.

STANDARD

Gaccessories™ are manufactured in accordance with ASTM C645 and ASTM A653.

TECHNICAL DATA

| SPECIFICATIONS | UNIT | VALUE |
|------------------|------|-------------|
| Material | - | Steel |
| Coating | - | Zinc Plated |
| Width | mm | 50- 75- 100 |
| Height | mm | 50- 75- 100 |
| Length | mm | 50 |
| Weight | g | 31 - 225 |
| Thickness | mm | 0.8- 3 |
| Yield Strength | Mpa | 250 |
| Tensile Strength | Mpa | 310 |